

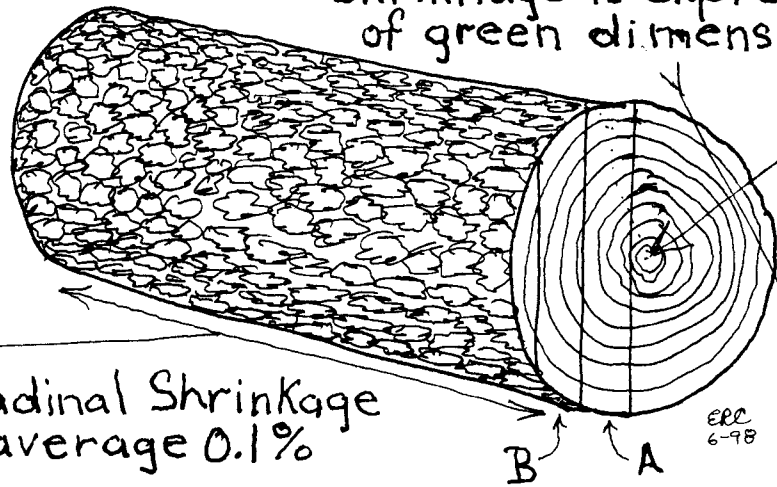
Wood Technology



Good wood

Bole of Tree

Shrinkage is expressed in percentages of green dimensions



Radial Shrinkage (loss in diameter) is on average 4.39%

Tangential Shrinkage (loss in circumference) is on average 7.95%

Longitudinal Shrinkage is on average 0.1%

On average Tangential shrinkage is 1.8 times the Radial shrinkage (called the shrinkage ratio) but differs greatly from species to species